

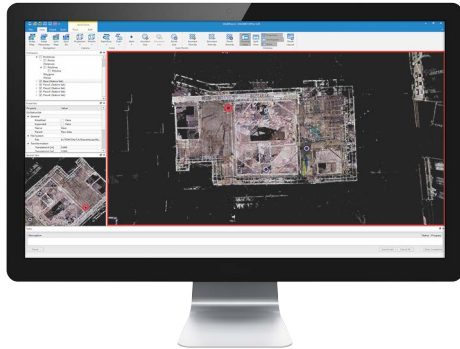


# MAGNET COLLAGE/ MAGNET COLLAGE WEB

3D POINT CLOUD SOFTWARE AND SERVICES



## MAGNET COLLAGE



### Powerful point cloud solution Single environment

Process, combine, and analyze point clouds and images in one familiar, powerful application. MAGNET® Collage offers a single environment post-processing solution for a wide variety of mass data collection tools.

### Process and register

- High-speed data processing 8x faster than previous software
- Advanced registration handling complex cloud-to-cloud and multi-level projects
- Full survey georeferencing capabilities including world map background
- Import data from Topcon or non-Topcon hardware

### Visualize, analyze, and transfer

- Fly through and navigate with ease
- Clean up point clouds by removing points, reducing density, and smoothing
- Generate orthophotos, take measurements, draw points and linework
- Export deliverables to industry standard file formats



**Scan Module**  
for GLS-2000



**Mobile Module**  
For IP-S scanner



**RD-M1 Module**  
Road surface scanning

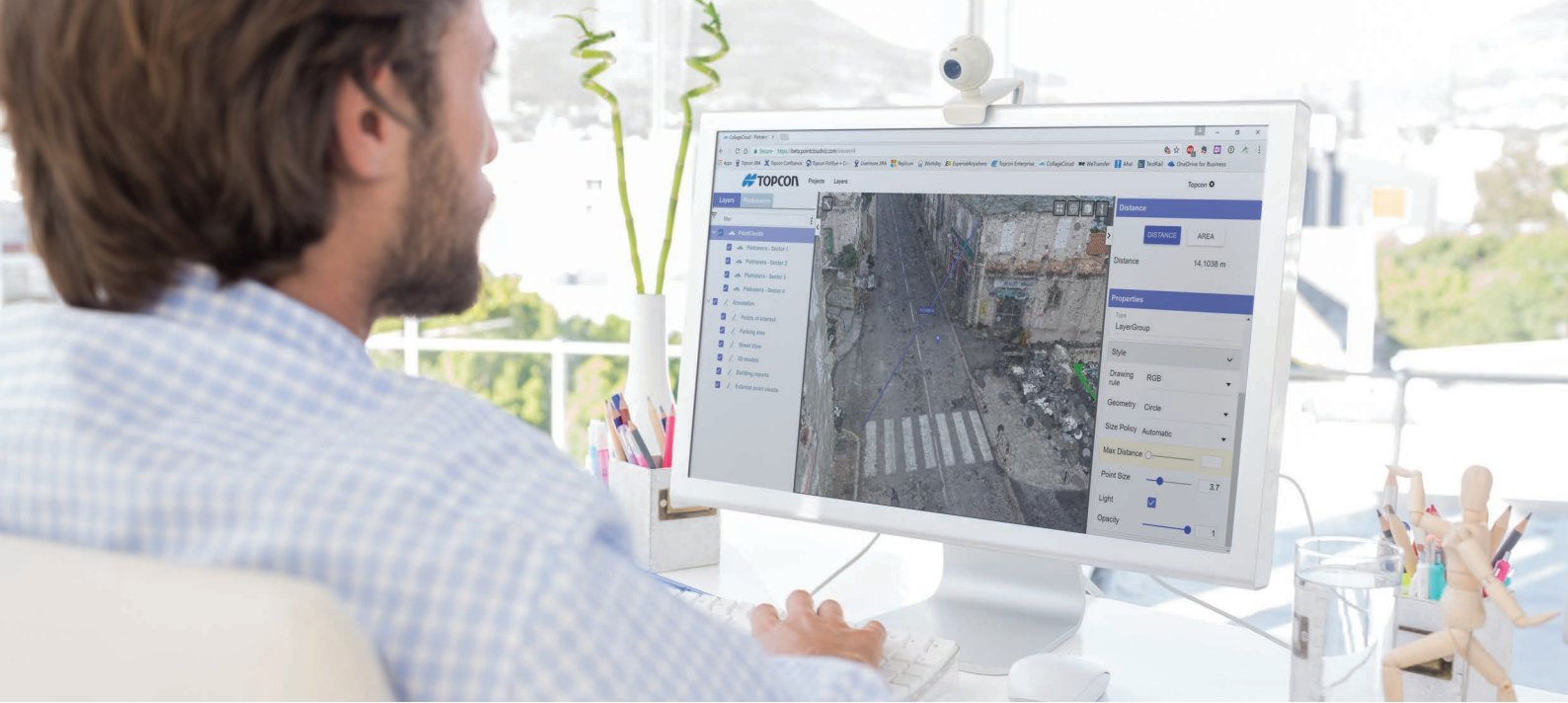
### Canvas module

- Functionality engine included with all kits
- Fuse data from all sensor types, analyze, and export
- Import UAV point clouds after post-processing by photogrammetric software
- Free viewer to share projects

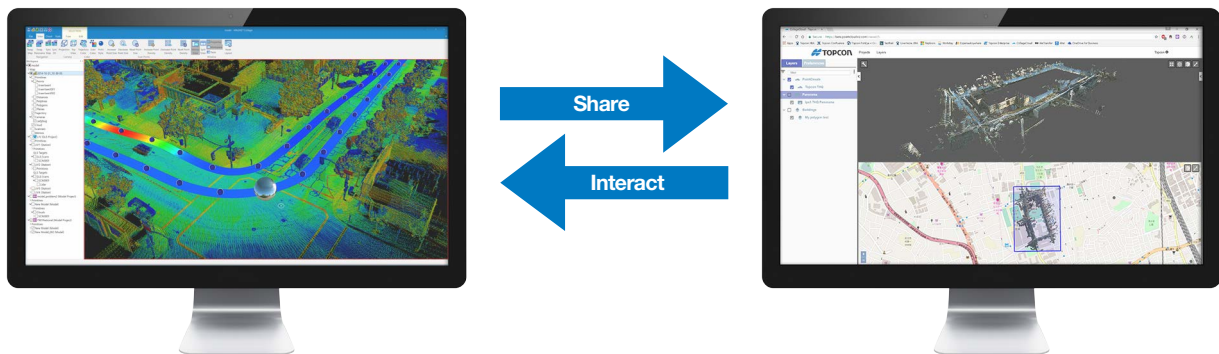
### Trajectory module

- Required when scanners are mounted on vehicles

System Requirements	
Operating System	64-bit Windows 7, 8, 10
CPU	Intel Core i7, Xeon (4 cores, 8 threads) or higher
RAM	DDR3 8GB or higher
Graphic Card	Nvidia, VRAM 512MB or higher
Storage	SSD 500GB or higher is recommended
Monitor	Resolution: SXGA (1280x1024) or higher



## MAGNET COLLAGE WEB



### Collaboration made easy.

Share point clouds with project stakeholders who can view, interact, and edit all from a web browser. Captured point clouds and photos processed by MAGNET Collage Office can be published to Collage Web for sharing and collaborating.

#### View

- Unrivaled web-based rendering performance and advanced features
- See high-resolution point clouds in a web browser
- 3D, panorama, and map views with split-screen functionality

#### Share

- Easily share and collaborate on datasets with users inside or outside of your organization

#### Analyze

- Measure distances and areas
- Define GIS features with customizable attributes
- Extract profiles and cross-sections
- Export deliverables to industry-standard file formats

#### Compatible web browsers

- Windows: Chrome, Firefox, Edge
- Linux: Chrome, Firefox
- MacOS: Chrome, Firefox



**Capture and Process**

**Share and Collaborate**

**MAGNET COLLAGE**

Total solution to manage and get more out of your 3D point cloud data.

**Subscribe today**

Available in one-year subscription with upgrade deals for legacy software users.

Part Description	What is Included				
	Canvas Module	Scan Module	Mobile Mapping Module	RD-M1 Module	Trajectory Module
Canvas Kit	X				
Scan Kit	X	X			
Mobile Kit	X		X		Required
Scan and Mobile Kit	X	X	X		Required
RD-M1 Kit	X			X	Required

**MAGNET COLLAGE WEB**

Seamlessly integrates with Collage desktop software to visualize, share, and collaborate.

Visit [topconpositioning.com/collageweb](http://topconpositioning.com/collageweb) today for a real-time fly-through.

**Subscribe today**

- Monthly subscription for 50GB storage, 100GB of streaming, and up to 5 users
- Up to 5 simultaneous users



For more information:  
[topconpositioning.com/magnet-collage](http://topconpositioning.com/magnet-collage)

Specifications subject to change without notice.  
©2017 Topcon Corporation All rights reserved.  
7010-2239 A 7/17



(855) 289-1772 [topconsolutions.com](http://topconsolutions.com)